



## WHS Simplified Summary of Changes for Clubs and Players

### Explanation for Each Major Change

#### 1. Course Rating and Slope Rating - APPLIED CURRENTLY

##### **Old:**

The USGA Course Rating System is the foundation of the USGA Handicap System and allows each player's Handicap Index to be transported from one course to another.

##### **New:**

The USGA Course Rating System will be referred to as "The Course Rating System" and will join "The Rules of Handicapping" to form the World Handicap System.

##### **Why it matters:**

The Course Rating System will be implemented by National Associations and allow a player's Handicap Index to be portable from course to course and country to country. This will provide an accurate and consistent measure of the difficulty of a golf course by ensuring that playing length and obstacle factors are evaluated the same way worldwide.

#### 2. Number of Scores Required to Obtain a Handicap Index – applied from 1 MARCH 2020

**Old:** A Handicap Index is issued to a player after five 18-hole scores are submitted and a revision takes place.

##### **New:**

A Handicap Index will be issued to a player after three 18-hole scores are submitted and a revision takes place. Scores can be made up of any combination of 9-hole and 18-hole scores.

##### **Why it matters:**

Lowers the barrier to entry for establishing a Handicap Index. Thus, enabling as many golfers as possible the opportunity to establish and maintain a Handicap Index.



# WORLD HANDICAP SYSTEM



## 3. Basis of Handicap Index Calculation - applied from 1 MARCH 2020

### **Old:**

When a score is submitted, it is converted to a Handicap Differential based on the Course Rating and Slope Rating of the tees that were played. Uses average of 10 best differentials out of most recent 20, and the result is multiplied by .96.

### **New:**

When a score is submitted, it will be converted to a Score Differential based on the Course Rating and Slope Rating of the tees that were played. In addition, *(a Playing Conditions Calculation will be included to account for any abnormal course or weather conditions. Not applicable in the UAE)*

The Handicap Index calculation uses the average of the 8 best Score Differentials out of the most recent 20 – with safeguards added to prevent extreme upward movement (see #4) and automatically reduce a Handicap Index if an exceptional score is posted (see #5).

### **Why it matters:**

An 8 of 20 system will allow for greater responsiveness to good scores and eliminate the need for a bonus for excellence. Safeguards add integrity to the system and support Handicap Committees.

## 4. Limit on Upward Movement of a Handicap Index (Cap) - will be applied from 1 JUNE 2020

### **Old:**

There is no restriction on the upward movement of a Handicap Index built into the calculation.

### **New:**

A “Soft Cap” and “Hard Cap” will be included within the Handicap Index calculation. The Soft Cap will slow upward movement by 50% if a 3.0 stroke increase takes place within a year. The Hard Cap will prevent upward movement beyond 5.0 strokes.

### **Why it matters:**

There’s no limit on the amount by which a player’s Handicap Index can decrease, but the Soft Cap and Hard Cap will ensure that a temporary loss of form doesn’t cause a player’s Handicap Index to increase to a level inconsistent with their demonstrated ability.



# WORLD HANDICAP SYSTEM



## 5. Exceptional Score Reduction (ESR) – will be applied from 1 JUNE 2020

### **Old:**

When a player submits two or more Tournament Scores (T-scores) within a 12-month period that are at least 3.0 strokes better than their Handicap Index, they are eligible for an automatic Handicap Index reduction.

### **New:**

When a player submits a score that produces a Score Differential of 7.0 strokes or more below their Handicap Index, they will be subject to an Exceptional Score Reduction.

If the Score Differential is 7.0 to 9.9 strokes better, a -1.0 reduction will take place. If the Score Differential is 10.0+ strokes better, a -2.0 adjustment will take place.

### **Why it matters:**

By considering all scores, a player's Handicap Index will be more responsive to exceptional performances in competitive and recreational play. The adjustment is straight-forward and applied automatically.

## 6. Playing Conditions Calculation (PCC) – WILL NOT BE APPLIED BY EGF

(Weather conditions In the region are generally consistent throughout the year. This remains an open option for the EGF and may be changed at a later stage should there be major changes to weather patterns in the region.)

### **Old:**

There is no calculation or adjustment to account for abnormal course or weather conditions. - [APPLIED CURRENTLY](#)

### **New:**

When abnormal course or weather conditions cause scores to be unusually high or low on a given day, a "Playing Conditions Calculation" (PCC) will adjust Score Differentials to better reflect a player's actual performance.

### **Why it matters:**

Provides a mechanism to adjust the Score Differential when playing conditions for the day are abnormal. PCC will also be used to identify if the Course Rating of a golf course needs to be



# WORLD HANDICAP SYSTEM



reviewed by the local Authorized Golf Association.

## 7. Frequency of Handicap Index Updates - applied from 1 MARCH 2020

**Old:** A Handicap Index is updated on the 1st and 15th of each month.

**New:** A player's Handicap Index will update daily (8 PM UAE time) , provided that the player submitted a score that day.

### **Why it matters:**

Provides players with a more responsive and up-to-date Handicap Index. This will also allow new golfers to establish their first Handicap Index more quickly.

## 8. Maximum Handicap Index - applied from 1 MARCH 2020

**Old:** The maximum Handicap Index is 36.4 for men and 40.4 for women.

**New:** The maximum Handicap Index for all golfers will be 54.0.

### **Why It Matters:**

Many players without a Handicap Index believe they are “not good enough.” With a higher maximum Handicap Index, the WHS strives to make the game more welcoming to new players, while keeping the interest of aging players where their ability diminishes over time.

## 9. Importance and Determination of Par – will be applied from 1 JUNE 2020

### **Old:**

Par has little significance because a Course Handicap represents the number of strokes a player receives in order to play down to the Course Rating of the tees being played – not Par.

### **New:**

Par will have an important role within the World Handicap System, requiring Par values to be more precise. The local Authorized Golf Association will determine Par based on yardage and effective playing length guidelines – while also considering how the hole was designed to be played.

### **Why it matters:**

The Course Handicap calculation will include a Course Rating minus Par adjustment, which will enable a Course Handicap to represent the number of strokes a player receives to play down to the Par of the tees being played.



# WORLD HANDICAP SYSTEM



Additionally, the maximum hole score for handicap purposes will be a “Net Double Bogey,” equal to Par + 2 + any handicap strokes the player receives. Also, when a player does not play a hole, “Net Par” must be recorded as their score for the hole. Net Par is equal to Par + any handicap strokes the player receives.

Both procedures benefit from more accurate Par values.

## 10. Course Handicap Calculation to include CR minus PAR adjustment - will be applied from 1 JUNE 2020

**Old:** Course Handicap = Handicap Index x (Slope Rating ÷ 113) - APPLIED CURRENTLY

**New:** Course Handicap = Handicap Index x (Slope Rating ÷ 113) + (Course Rating – Par)

### **Why it matters:**

Beginning in 2020, Course Handicap values will change more from tee to tee, as they will represent the number of strokes needed to play to Par.

This new calculation will allow players to compete from different tees without any adjustment – unless a difference in Par exists.

Players will be able to determine their Target Scores (the score they’ll shoot if they play to their handicap) by simply adding their Course Handicap + Par.

## 11. Playing Handicap Calculation and Application of CR-PAR adjustment - will be applied from 1 JUNE 2020

### **Old:**

When a player’s Course Handicap is adjusted based on the application of a Handicap Allowance or other term(s) of a competition, it is still referred to as a Course Handicap. ) - APPLIED CURRENTLY

### **New:**

Playing Handicap will be introduced and will represent the actual number of strokes a player gives or receives for the round being played. The Course Handicap and the Playing Handicap will typically be the same value. However, when Handicap Allowances are used or Par is different between tees, there is an adjustment to make the competition equitable.

### **Why it matters:**



# WORLD HANDICAP SYSTEM



There will be a clear distinction between two definitions, where both serve specific purposes. A Course Handicap will be used to adjust individual hole scores (Net Double Bogey and Net Par procedures). A Playing Handicap denotes the actual number of strokes given or received during a recreational or competitive round of golf.

## 12. Maximum Hole Score for Handicap Purposes (Net Double Bogey) - APPLIED CURRENTLY

**Old:** The maximum hole score for handicap purposes is based on a player's Course Handicap and the Equitable Stroke Control (ESC) table.

**New:**

The maximum hole score for each player will be limited to a Net Double Bogey, equal to Par + 2 + any handicap strokes received (based on the player's Course Handicap).

**Why it matters:**

By factoring in Par and Stroke Index values under the Net Double Bogey procedure, adjusted hole scores will be more precise and reflective of each player's demonstrated ability.

## 13. Treatment of 9-Hole Scores - APPLIED CURRENTLY

**Old:**

To submit a nine-hole score, a player must play 7 to 12 holes under the Rules of Golf. When 13 or more holes are played, the score submitted qualifies as an 18-hole score. A player can have a Handicap Index and/or a nine-hole Handicap Index (N).

**New:**

To submit a nine-hole score, a player must play 7 to 13 holes under the Rules of Golf. When 14 or more holes are played, the score submitted qualifies as an 18-hole score.

**Why it matters:**

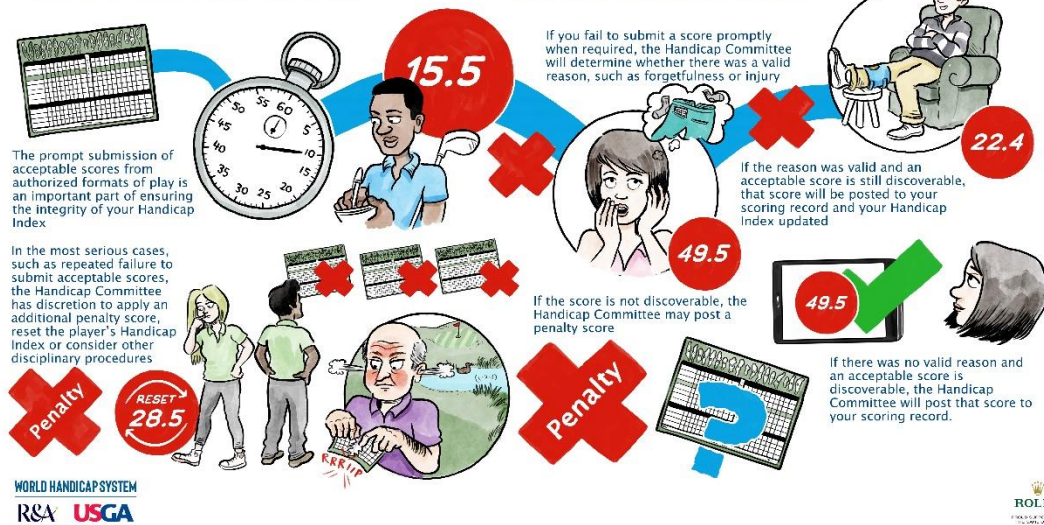
Players around the world will now have a single Handicap Index, and there will no longer be a nine hole Handicap Index (N).

The method for calculating a Handicap Index will be the same worldwide, and this applies whether a player submits all 9-hole scores, 18-hole scores, or a combination of both. The Handicap Index will be interchangeable for both 9-hole and 18-hole play.



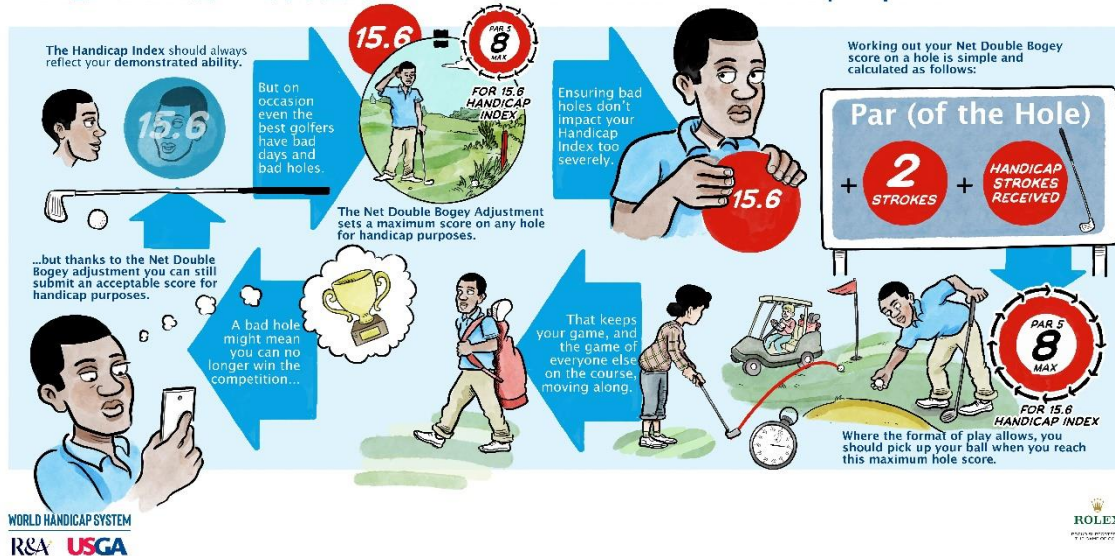
Please see attached Educational posters which assist and explain the various points in more visual detail.

## WORLD HANDICAP SYSTEM



## WORLD HANDICAP SYSTEM

### Maximum Hole Score for Handicap Purposes



## WORLD HANDICAP SYSTEM

**Maximum Handicap Index**

The World Handicap System is designed to be inclusive and accessible to new golfers. They need only submit a small number of scores, in any combination of 9 or 18-hole scores, to obtain an Initial Handicap Index – the maximum being 54.0

Offering a Handicap Index up to 54.0 provides greater incentives for new golfers to keep playing.

This presents realistic, achievable targets each time they play and allows them to track their progress within the game

The competitions offered should also accommodate all levels of handicap, to give everyone a chance of doing well and having fun.

Responsive updates ensure a Handicap Index continues to reflect a player's golfing ability.

To ensure continued enjoyment of the game for all golfers, Club Committees should encourage proper etiquette and a good pace of play, reminding players they can pick up when appropriate if the format of play allows.

competitions for different handicap ranges  
0-18 19-36 37-54

54.0 53.2 52.9 51.5 50.7

WORLD HANDICAP SYSTEM  
R&A USGA

ROLEX

## WORLD HANDICAP SYSTEM

**Handicap Committee Review**

The Handicap Index should always reflect a player's demonstrated ability

To ensure this, it is strongly recommended that Handicap Committees review the Handicap Index for all their home club members at least once each calendar year

When reviewing each Handicap Index, the Handicap Committee should consider all available information about a player before deciding whether any adjustments are required

Regular handicap reviews help ensure the game is played on a fair and equal basis for all members, wherever they are playing and whoever they are playing against

Additionally, the Handicap Committee has power to withdraw or reinstate a player's Handicap Index in certain circumstances, or to adjust it due to a player's temporary or permanent disability

A player's Handicap Index may be adjusted upwards or downwards. The Committee may also freeze it, or place a block on it moving upwards, for a defined period

31.8 33.0 31.5 27.8 15.6

Withdraw HI

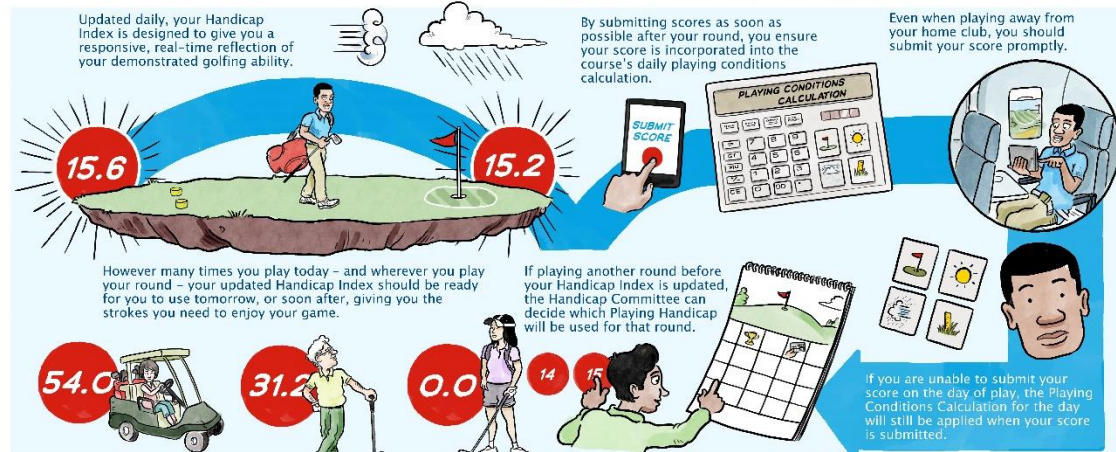
WORLD HANDICAP SYSTEM  
R&A USGA

ROLEX



## WORLD HANDICAP SYSTEM

### Responsive Handicap Index Updates

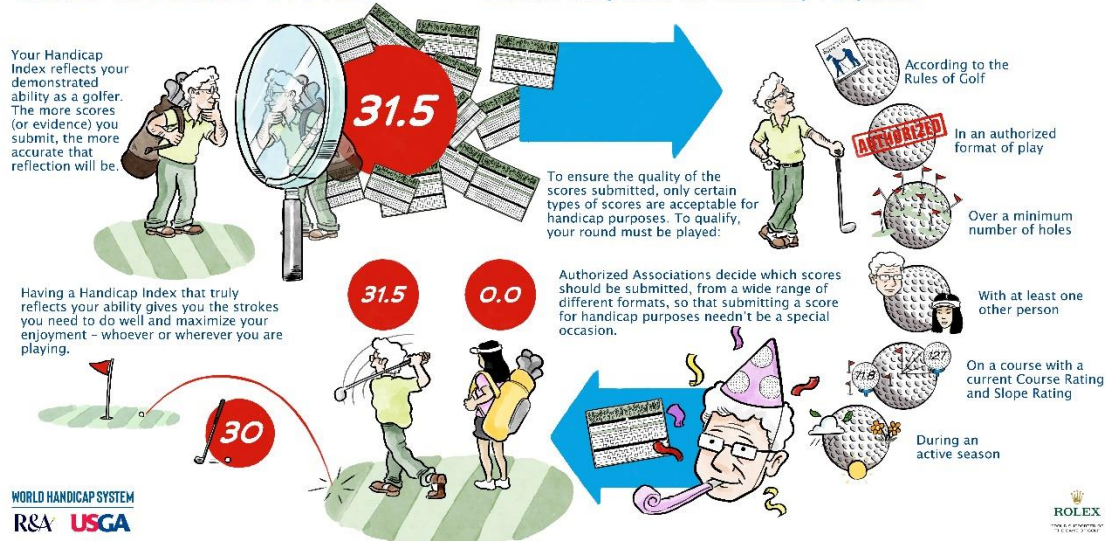


WORLD HANDICAP SYSTEM  
R&A USGA

ROLEX  
OFFICIAL TIMEKEEPER OF THE WORLD GOLF CHAMPIONSHIP

## WORLD HANDICAP SYSTEM

### Scores Acceptable for Handicap Purposes



## WORLD HANDICAP SYSTEM

### Calculation of Playing Handicap

Your Handicap Index provides a portable representation of your playing ability. But some courses are harder than others



That's why, when you go out on course, your Handicap Index is converted to a Playing Handicap

You can play with or against any other golfer on a fair and equal basis, in any format of play, on any course

Handicap Allowance (90%)



WORLD HANDICAP SYSTEM  
R&A USGA

This means you can enjoy your game without worrying about having to make these calculations

First, your Index is adjusted by the Slope Rating of the course you're playing



Next, your Course Handicap is multiplied by the applicable Handicap Allowance for your chosen format of play

Normally, you'll be able to find the number of strokes you'll receive via an app or on a look-up chart in the clubhouse or close to the first tee



ROLEX  
WORLD GOLF CHAMPIONSHIP

## WORLD HANDICAP SYSTEM

### Calculation of Playing Handicap

Your Handicap Index provides a portable representation of your playing ability. But some courses are harder than others



That's why, when you go out on course, your Handicap Index is converted to a Playing Handicap

You can play with or against any other golfer on a fair and equal basis, in any format of play, on any course

Handicap Allowance (90%)



WORLD HANDICAP SYSTEM  
R&A USGA

This means you can enjoy your game without worrying about having to make these calculations

First, your Index is adjusted by the Slope Rating of the course you're playing



Secondly, any difference between the Course Rating and Par is factored in, ensuring correct application of Net Double Bogey and Net Par adjustments

Normally, you'll be able to find the number of strokes you'll receive via an app or on a look-up chart in the clubhouse or close to the first tee



ROLEX  
WORLD GOLF CHAMPIONSHIP

Happy golfing!